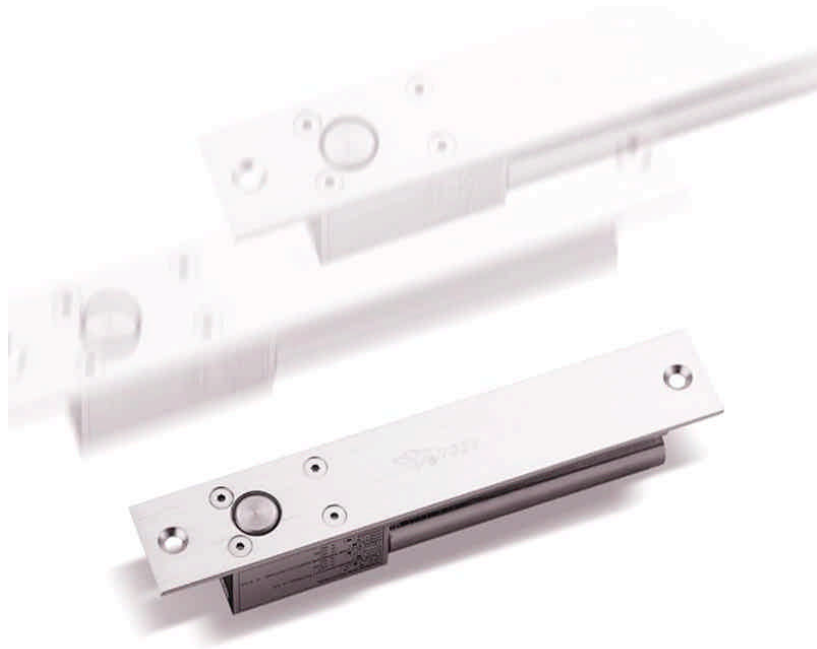


SA-DB-1



DIMENSIONS:

BODY: 20cm L x 3.4cm W x 4.2cm D
COVER PLATE: 21cm L x 4.2cm W x .08cm D
FACE PLATE: 20cm L x 3.4cm W x 0.3cm D
STRIKE PLATE: 9cm L x 2.4cm W x 2.7cm D
BOLT: S/S 1.55CM DIA. WITH 1.6CM THROW

CURRENT DRAW: 900mA/12VDC (PULL-IN CURRENT)

HOLDING CURRENT: 12VDC – 360mA

VOLTAGE: 12VDC
WITH LOCK AND DOOR STATUS SENSOR.

TIME DELAY SETTINGS:
0 sec., 2.5 sec., 5 sec., 9 sec.

FAIL-SAFE:
UN-LOCKED WHEN DE-ENERGIZED
AUTO-RELOCK JUMPER
BUILT-IN VOLTAGE SPIKE SUPPRESSOR

WEIGHT: 2.0 LBS / 0.9KGS.